



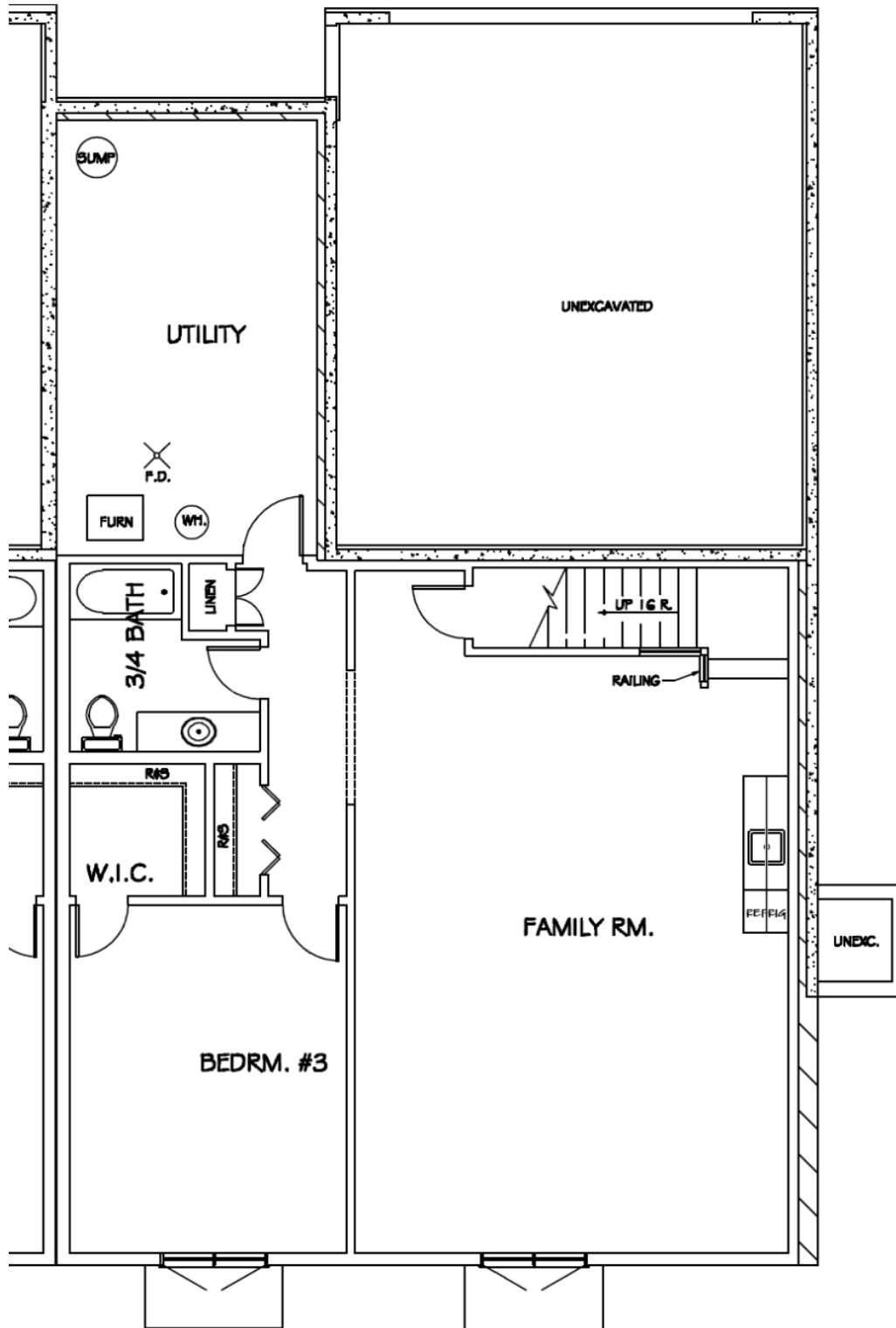
MADELYN  
CREEK

# Church Lake South

◦ Welcome Home ◦ Victoria, MN ◦

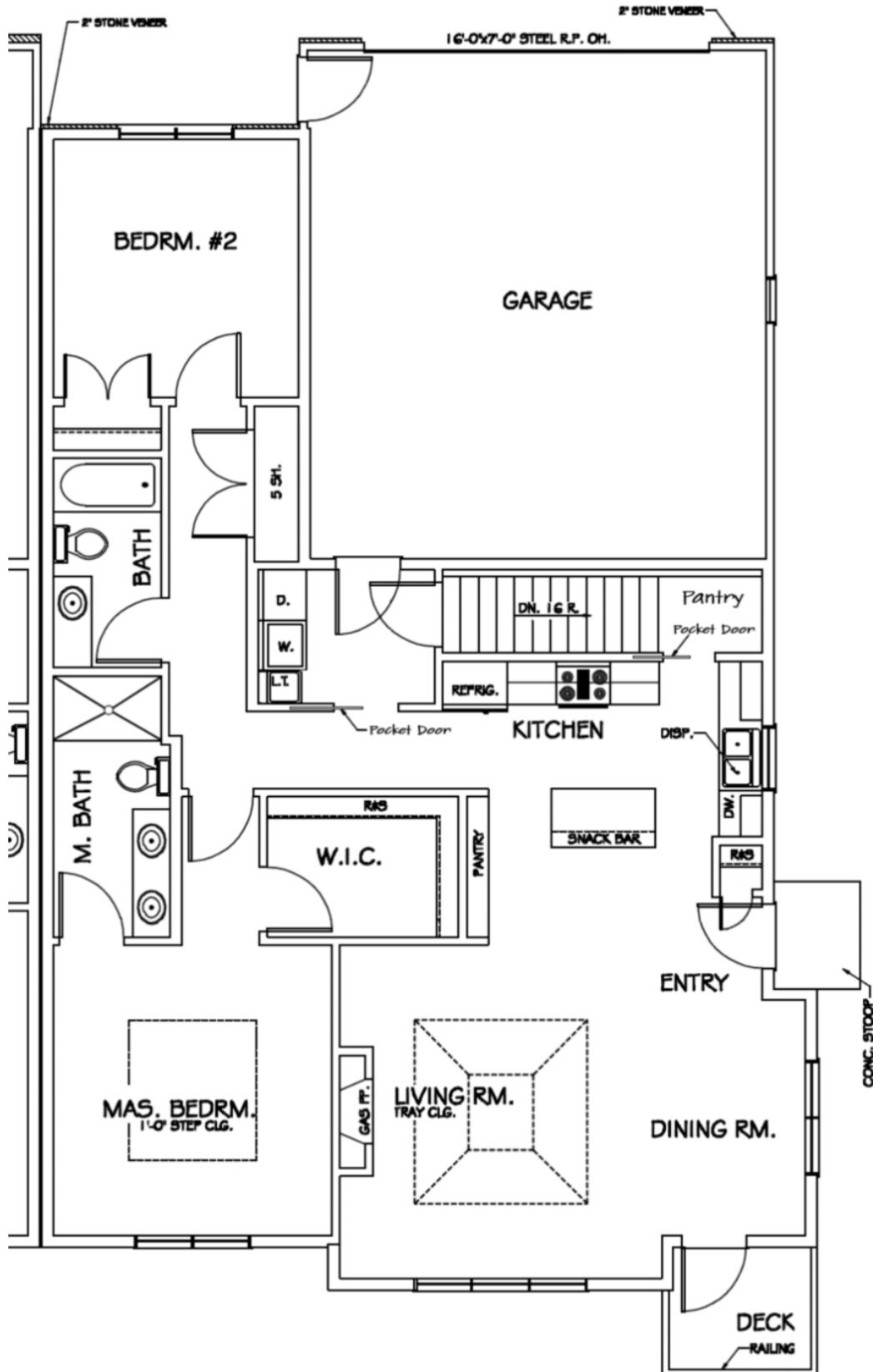
"A City of Lakes and Parks"

## Lower Level





## Main Level





## Unit Features

### **Church Lake South - \$310,000.00**

- **End unit**
- **Granite counter tops in Kitchen and Master Bath vanity tops**
- **3 - bedrooms including a master suite**
  - **1 - Lower level**
  - **2 - Main level including the Master Suite**
- **2 - Walk in closets**
- **Lower level wet bar**
- **3 - Full Baths**
  - **2 - Main level including a master bath**
  - **1 - Lower level**
- **2 - Car garage 22' X 24' deep**
- **Total finished area of 2,488 square feet**
  - **Foundation Total = 1,328 square feet**
  - **Main Level Finished = 1,400 square feet**
  - **Lower Level Finished = 1,088 square feet**
- **Storage in basement**
- **Large mechanical room in basement**