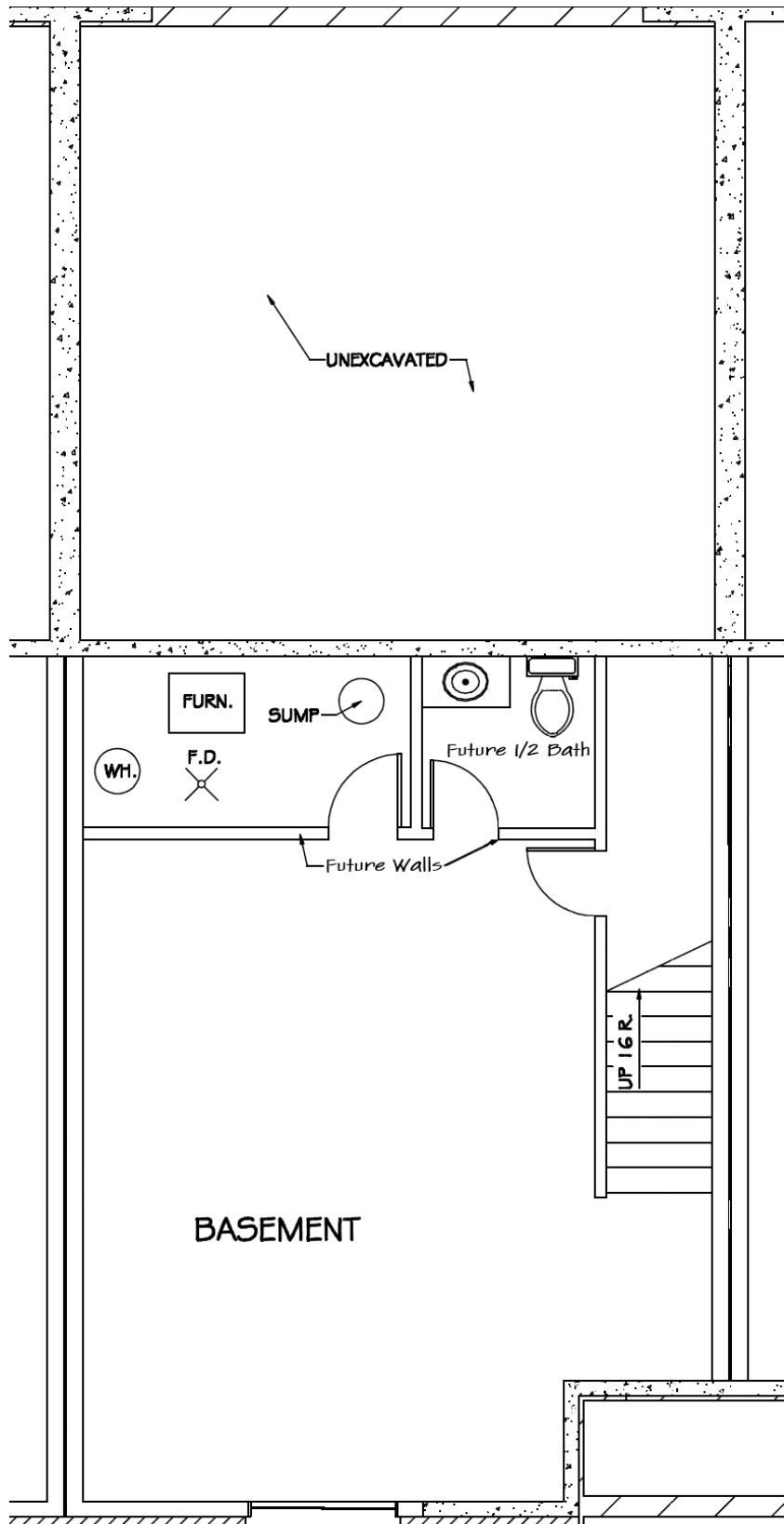




The Marsh

Lower Level

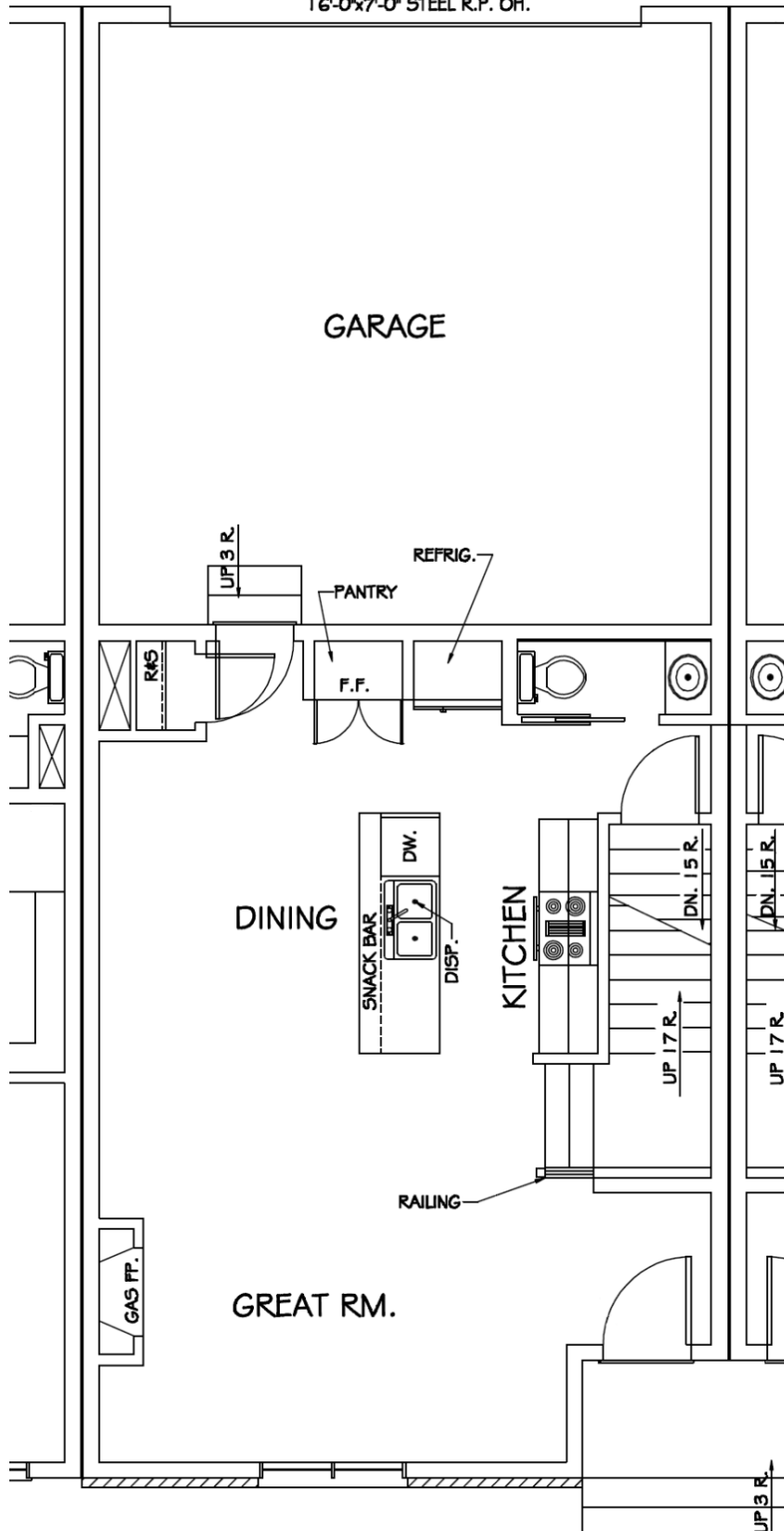




The Marsh

Main Level

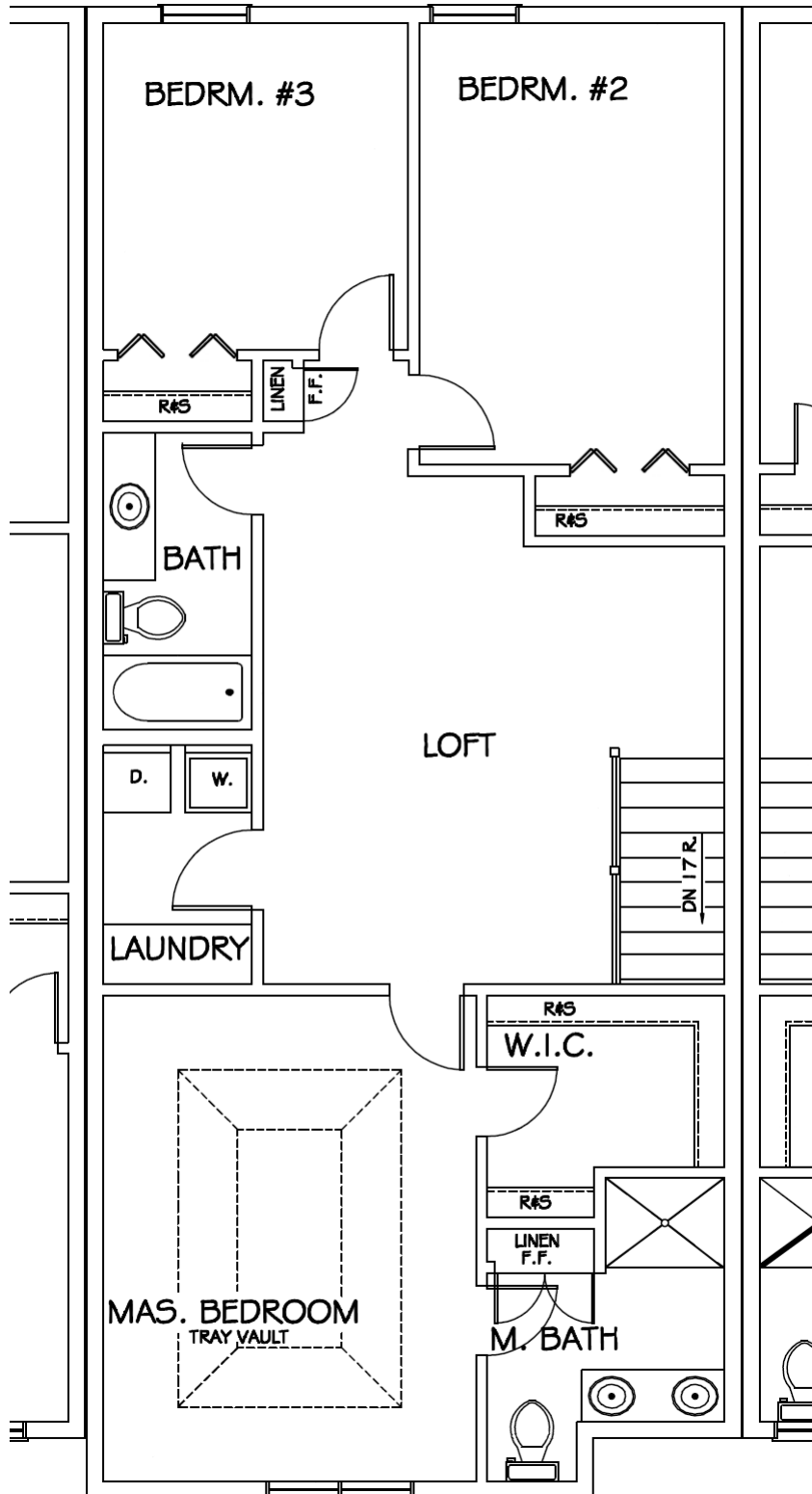
16'-0"x7'-0" STEEL R.P. OH.





The Marsh

Upper Level





The Marsh

◦Welcome Home ◦Victoria, MN ◦

"A City of Lakes and Parks"

Unit Features

The Marsh - \$218,000.00

- **Middle unit**
- **3 - bedrooms including a master suite**
- **Includes granite kitchen island counter top**
- **Includes granite master bath vanity tops**
- **Main level 1/2 bath**
- **2 - upper level baths including a master bath**
- **2 - car garage 22' X 21' deep**
- **Total finished area of 1708 square feet**
- **Future unfinished basement that will add another 486 square feet**
- **Additional plumbing for a 1/2 bath in the lower level**
- **Storage in basement**
- **Total potential finished area is 2326 square feet with finished basement area**